



Hospital Solutions

Intensive Care Units

Elektra Hellas



Bed Head Units for Critical Care Areas

I.C.U.-1: I.C.U.-1: Intensive Care Unit consisting of a single console which is installed above the patient's bed. Large, unobstructed throughput capacity for supply lines provides for installation of all necessary electrical and medical gas outlets.



I.C.U.-2: Intensive Care Unit consisting of one I.C.U.-1 unit and one Medlux B.H.U. unit for indirect and direct lightings.



Medical Gases

The medical gas channel is completely insulated from electrical and brings medical-grade copper pipes from the respective outlet valves to the central connection point.

The front cover of the gas compartment provides easy access to various types of Gas Outlets (French type, DIN, BS).

Material – LV, ELV Outlets

Designed for additional space, body design is made of aluminum extrusion, painted in powder coating. All necessary electrical sockets in different types (Schuko 230V/16A, BS 230V/13A, Euro 230V/16A etc) are available in various colors, indicating various supply (Normal, SV, ZSV), as well as potential equalizations. Easy access is achieved through the front cover of the electrical compartment.

RJ45 Cat.6 Data / Telephone outlets, Nurse Call System outlets, or other can be installed in a nice and homogenous way.



Central connection point - Installation

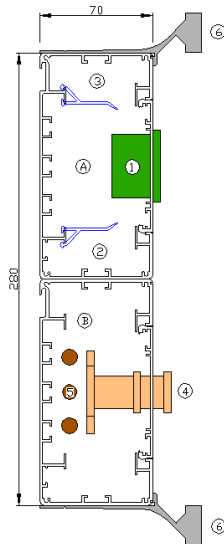
All cables and gas pipes are routed through individual channels at a central connection point, where the interface between the ICU and the supply is located. Special flush brackets provide for easy installation.

Additional Equipment

Mounting Rails are optionally integrated on the top and bottom part of the ICU units, enabling a solid grip of all necessary equipment. Monitor disks with or without drawer, examination lights with articulating, swiveling arms, LCD monitor articulating gas spring arms, serum hangers, infusion rods suitable for the integrated medical rails. Other additional equipment, such as electronic clock – chronometers, can easily be integrated.

Bed Head Units Technical Description

Model : Medlux ICU
for Critical and Intensive Care Areas



Weight per meter (without equipment)

7,2 Kgr

Description

A. Electrical Compartment B. Medical Gas Compartment

1. Electrical Equipment (Sockets, Tel., Data, NCS...)
2. Low Voltage Cables
3. Extra Low Voltage Cables
4. Gas Outlets
5. Copper Pipes
6. Medical Equipment Rail 25x10mm.

Elektra Hellas S.A.

G. Katsimicha street , 19002
Peania – Greece
www.elektarahellas.gr

Tel: ++30 210 66.46.781
Fax: ++30 210 66.46.902
e-mail: elektra@elektarahellas.gr

CE Marking

Medlux BHU and ICU units are medical devices (class IIb) and correspond to the legal requirements under Annex II of directive 93/42/EEC, based on the management system and EN ISO 13485, as well as the provisions of the Medical Devices Act.