



Hospital Solutions

Bed Head Units

Elektra Hellas



Bed Head Units for Normal Care Areas

Indirect - General Lighting

Powerful lighting, using 1 or 2 rows of: 36W / 58W T8 Lamps, or 39W / 54W T5 Lamps, installed above a polished aluminum reflector.

The flush fitted acrylic prismatic diffuser creates a cozy atmosphere, providing with uniform light without annoying reflections.

Use of electronic starters provides for optimum performance of lamp tubes.



Direct – Reading/Examination Lighting

The Easy-to-access Direct Light uses one or two 18W T8 or 24W T5 Lamps, installed below a polished aluminum reflector. A special acrylic diffuser for longitudinal glare control ensures the exact illumination and the precise angle of reading lighting for the patient. Best performance is achieved with the use of an electronic starter, normal or dimmable, without disturbing occupants of adjacent beds.

Control of light can vary by either a simple switch, a pull cord switch, or through the patient handset.



Material -

LV, ELV Outlets

Durable body design is constructed with extruded, heat treated, aluminum, painted in powder coating or naturally anodized.

A wide variety of color combinations can be achieved in conjunction with colored Medical Gases Casings.

Different types of electrical sockets (Schuko 230V/16A, BS 230V/13A, Euro 230V/16A etc) are available in different colors, indicating various supply (Normal, SV, ZSV). Potential equalizations can also be installed where necessary. Easy access is achieved through the electrical compartment cover.



Communication systems of all common systems such as RJ45 Cat.6 Data / Telephone outlets, Nurse Call System outlets, or other can be installed in a nice and homogenous way, completely wired and assembled in our factory as an option.

Medical Gases

The spacious front side medical gases compartment provides for easy access to the medical gases. Medical Gases Casings with high mechanical strength for various types of Gas Outlets (French type, DIN, BS) are installed in the front side of the BHU.



Central connection point - Installation

All cables and gas pipes are routed through individual channels at a central connection point, ready to be linked to various supplies.

Compartmental design segregates services through the length of the BHU, completely insulating medical gas service from both low and extra low voltage.

Special flush brackets provide for easy installation.



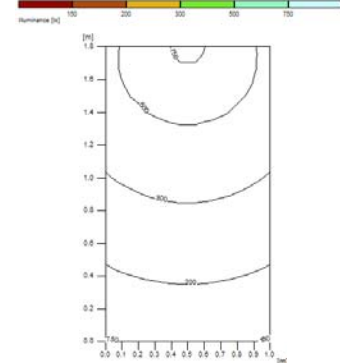
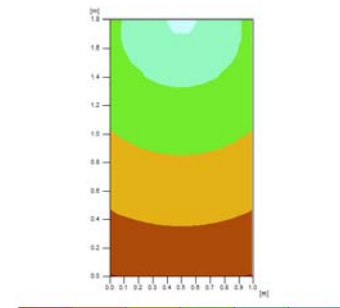
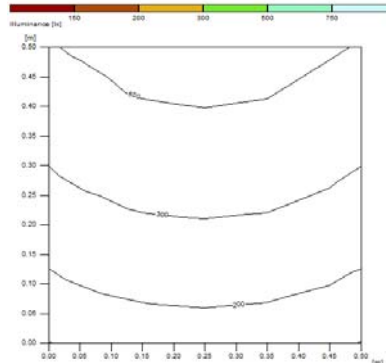
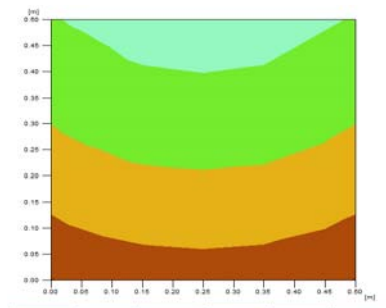
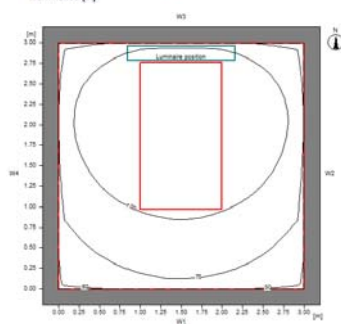
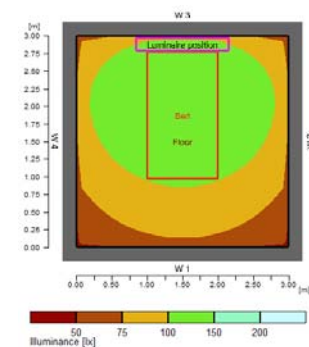
Lighting characteristics

General Lighting	Reading Lighting	Night Lighting
Fluorescent T8 or T5 Light color 840, 4000° K, Ra80	Fluorescent T8 or T5 Light color 840, 4000° K, Ra80	Incandescent or Compact Fluorescent or LED
1 or 2 36W 1 or 2 58W 1 or 2 39W 1 or 2 54W	1 or 2 18W 1 or 2 24W	15 W 7 W 2 W

General Lighting (Indirect)	Reading Lighting (Direct)	Examination Lighting (Indirect + Direct)
-----------------------------	---------------------------	--

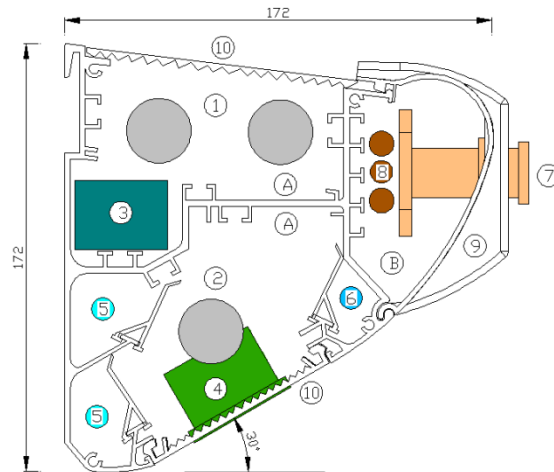
Recommendations according to EN 12464

100 Lux	300 Lux	300 Lux
2 x T5 54W	1 x T5 24W	2xT5 54W + 1xT5 24W
Average Illuminance= 120Lux	Average Illuminance=330Lux	Average Illuminance=350Lux



Bed Head Units Technical Description

Model : Medlux BHU
for Normal Care Areas



Weight per meter (without equipment)

6,3 Kgr

Description

A. Electrical Compartment B. Medical Gas Compartment

1. General Lighting (36 or 58W TLHF)
2. Reading Lighting (18W TLHF)
3. Lighting Electronic Starters
4. Electrical Equipment (Sockets, Tel., Data, NCS...)
5. Low Voltage Cables
6. Extra Low Voltage Cables
7. Gas Outlets (AFNOR, BS, DIN...)
8. Copper Pipes
9. Front cover
10. Prismatic Lighting Diffusers

Elektra Hellas S.A.

G. Katsimicha street , 19002
Peania – Greece
www.elektarahellas.gr

Tel: ++30 210 66.46.781
Fax: ++30 210 66.46.902
e-mail: info@elektarahellas.gr

CE Marking

Medlux BHU and ICU units are medical devices (class IIb) and correspond to the legal requirements under Annex II of directive 93/42/EEC, based on the management system and EN ISO 13485, as well as the provisions of the Medical Devices Act.